



POGGIO CITERNA NATURAL PATH

Fantastic walking trail that's ideal for school trips or family get-togethers. It features interesting and educational stops focusing on **NATURE**, **THE SURROUNDING AREAS** and **HISTORY**.

The trial begins and ends in the village of Poggio alla Croce, just after the ridge of the hill named Citerna.

It's an enjoyable walk full of interesting environmental and historical information presented on several panels along the trail. The views are wide open and beautiful.

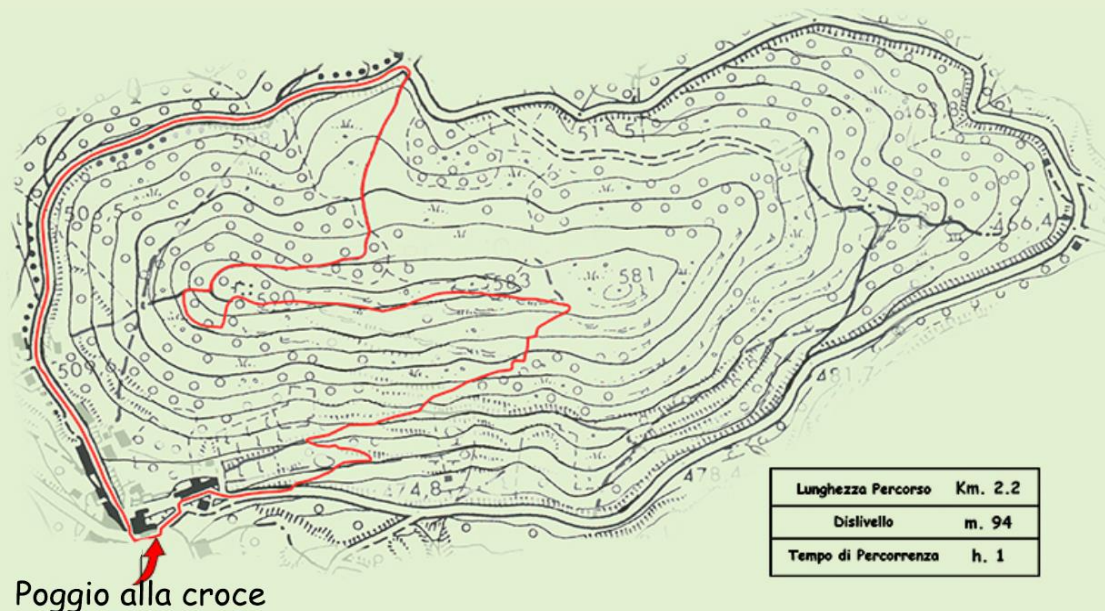


The hill of Citerna (d. 590), which is part of the mountain range of the Chianti hills, has been inhabited since very early times. In fact, on its ridge a well-known archaeologist, Alvaro Tracchi, discovered traces of an Etruscan-Roman settlement. As well, the ruins of a medieval monastery of women can still be seen today. Between the thirteenth and fourteenth centuries the nuns occupied, most likely, a building that was even older. Perhaps it was Lombard defense fortress, given its geographical location and the discovery of an old worn coin of that historical period.

Poggio alla Croce, however, has long been a simple crossroads frequented since ancient times. And here on this pass existed a small working country field hospital. The hospital could be seen to passing travelers by its iron cross that now stands on the hill of Citerna. This hill is today almost entirely covered with a forest of chestnut and oak, but was once partly cultivated by stone terraces.

The nature trail starts from here, The Piazza del Giaggiolo (or Iris Square). It is 2,200 meters long. There are information boards along the trail that offer explanations about the natural history of this area, our little corner of Tuscany. We are located between the Arno valley and the Chianti region and between the two cities of Florence and Arezzo. Both of these cities can be seen while walking up the path to Citerna hill.

This walk, suitable for everyone, offers points of interest that range from historical to environmental as well as areas of great panoramic beauty. There are lovely spots along the way to relax and enjoy the beautiful scenery. Once you reach the Crocina passage and walk up the hill to the cross at the top of Citerna hill you will experience views that stretch from the Ema valley all the way to the Florentine plain where you can see Brunelleschi's magnificent Duomo and beyond. Before arriving at what remains of the medieval monastery your eyes will see the wide open views of the upper Valdarno and Pratomagno. Further in the distance you will see the city of Arezzo. Shortly afterwards you will return down to the village after having completed a one hour loop on the easy and enjoyable trail. We hope you will take with you the memory of a pleasant walk that never ceased to surprise you.



Poggio alla Croce

More information on WWW.POGGIOALLACROCE.IT